

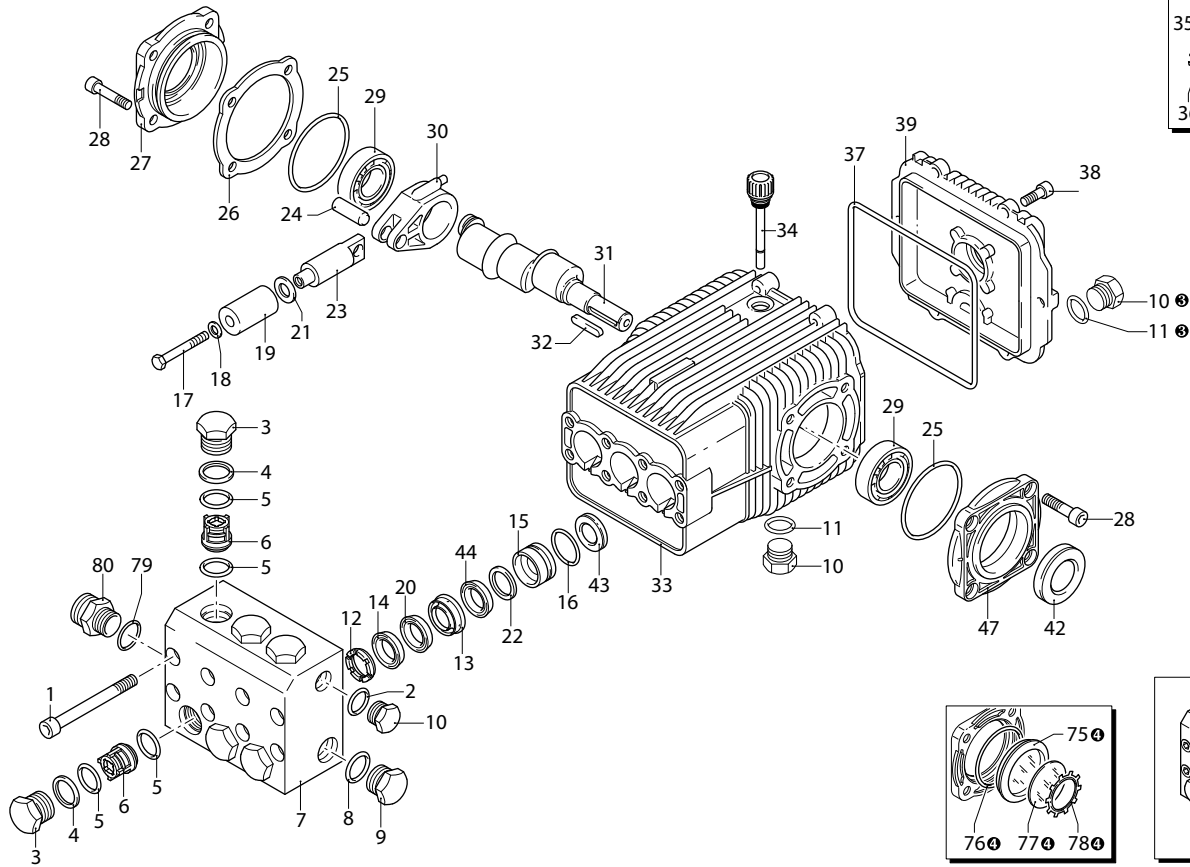
# XWL-SS

VERSION

# N

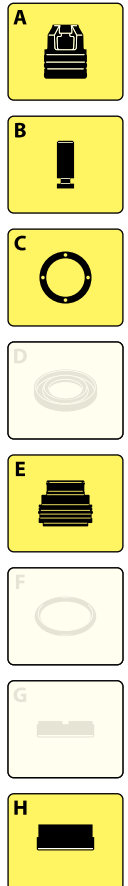
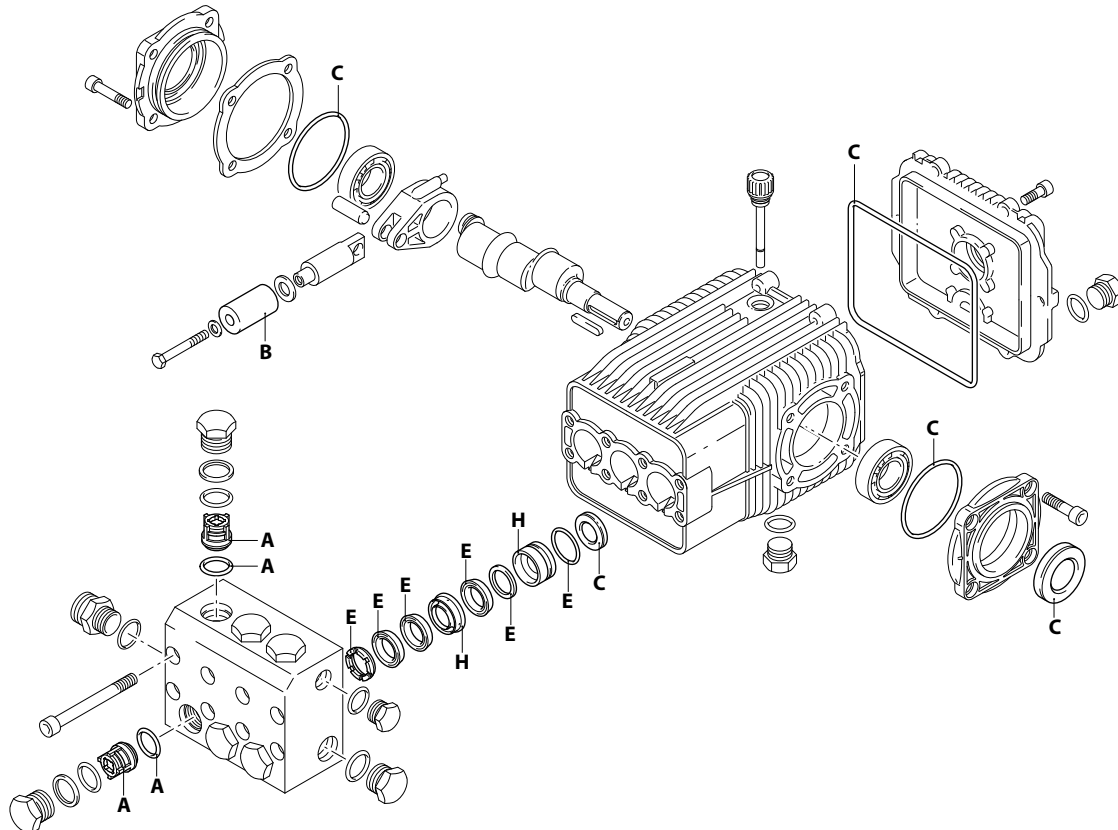
# 950-1450<sub>rpm</sub>

# ∅ 24 mm



UN002251-BU

## PART KITS / 配套零件



UN002252-BU

# 252 Series

XWL-SS 950-1450 rpm N version ø 24 mm

33.06  
50.15

33.08

26.06

30.09

42.05

42.15



Pos. 序号	Cod. 编号	Description	描述	Qt 数量	Note 备注	Pos. 序号	Cod. 编号	Description	描述	Qt 数量	Note 备注
1	1941360	Screw	TCEI M10x80	8	C=42Nm	36	1260430	Ring	环	1	ⓐ
2	740291	O-ring	Ø 14x1,78	1	Viton	37	1940410	O-ring	Ø 132x3	1	
3	2520030	Plug		6	Inox C=60Nm	38	680560	Screw	TCEI M6x16	6	C=7Nm
4	1940150	Ring	antiestrusione	6		39	2529010	Cover		1	
5	1140451	O-ring	Ø 20,24x2,62	6	Viton	40	1780690	Plate		1	ⓐ
6	2529050	Complete valve		6		41	1140450	O-ring	Ø 20,24x2,62	1	ⓐ
7	2520150	Head		1	Inox	42	820680	Ring	tenuta	1	(a)
8	550351	O-ring	Ø 23,81x2,62	1	Viton	43	1940560	Ring	tenuta	3	
9	2520040	Plug	3/4" G	1	C=40Nm	44	2520361	Gasket		3	■
10	2340350	Plug	3/8" G	2	ⓐ C=20Nm	47	2520320	Support	cuscinetto aperto	1	
11	740290	O-ring	Ø 14x1,78	3	ⓐ	60	2529200	Head assembly		1	
12	1941570	Ring	appoggio Ø28	3		75	1941270	Level gauge		1	④
13	2520210	Piston guide	anteriore Ø28	3		76	100410	O-ring	Ø 34,6x2,62	1	④
14	820632	Gasket		3	Viton ■ Verde	77	1941260	Plate		1	④
15	2520200	Piston guide	posteriore Ø28	3		78	1941290	Ring		1	④
16	820491	O-ring	Ø 34,65x1,78	3	Viton	79	550351	O-ring	Ø 23,81x2,62	1	▼
17	2520400	Screw		3	✱ C=7Nm	80	1943270	Fitting		1	▼
18	800561	O-ring	Ø 8,73x1,78	3	Viton						
19	2520240	Piston		3	C=20Nm						
20	2520220	Ring	antiestrusione	3							
21	2520270	Plate		3	Inox						
22	2520230	Ring	antiestrusione	3							
23	1940960	Piston	di guida	3							
24	1940060	Hub pin		3							
25	1941380	O-ring	Ø 66,34x2,62	2							
26	1941390	Shim	0.05 mm	1÷3							
	1941400	Shim	0.10 mm	1÷3							
	1941410	Shim	0.19 mm	1÷3							
	1941420	Shim	0.25 mm	1÷3							
27	2529011	Cover		1							
28	2340240	Screw	TCEI M8x16	8	C=20Nm / Inox						
29	1140410	Bearing		2							
30	1940051	Connecting-rod	alluminio	3	ⓐ C=20Nm						
31	1940160	Shaft	marcato 1	1	○						
	1940170	Shaft	marcato 2	1	●						
	1940520	Shaft	marcato 5	1	▲						
	1940530	Shaft	marcato 6	1	□						
	1943280	Shaft	marcato 10	1	▼						
32	650250	Key		1							
33	2520330	Pump body		1							
34	1140370	Plug		1							
35	1260250	Level gauge		1	ⓐ						

ⓐ Part of part n° 2529010 / 配件号是2529010

④ Part of part n° 2529011 / 配件号是2529011

## PART KITS - 配套零件

A=KIT 2162 valves 单向阀		B=KIT 2163 pistons 柱塞		C=KIT 2873 oil seals 油封		E=KIT 2164 water seals 水封	
Pos. 序号	Q.ty 数量	Pos. 序号	Q.ty 数量	Pos. 序号	Q.ty 数量	Pos. 序号	Q.ty 数量
5	6	19	3	25	2	12	3
6	6			37	1	14	3
				42	1	16	3
				43	3	20	3
						22	3
						44	3

H=KIT 2165 pistons guide 柱塞套							
Pos. 序号	Q.ty 数量	Pos. 序号	Q.ty 数量	Pos. 序号	Q.ty 数量	Pos. 序号	Q.ty 数量
13	3						
15	3						

## SIMBOLOGIA - 标记

- For / 用于 XWL-SS 33.06 XWL-SS 33.08
- For / 用于 XWL-SS 26.06
- For / 用于 XWL-SS 42.05 XWL-SS 42.15
- ▼ For / 用于 XWL-SS 50.15
- ▲ For / 用于 XWL-SS 30.09

C Tightening torque tolerance 0÷10% / 拧紧力矩公差 0÷10%

ⓐ Screw with Loxeal 55-14 / 用 Loxeal 55-14 螺丝

■ Lubricate with a THIN coat of "PG 54" silicone grease on the INNER diameter only / 仅在口径内侧用薄薄的 PG54 硅润滑脂润滑

✱ The thread lock should only be placed on the nut, not on the screw prior to assembly / 螺纹锁应该放在螺母上，而不是放在配件之前的螺栓上

(a) Fit the seal with tool code nr. 1941990 / 用 nr. 1941990 工具进行密封

### Oil - 机油

Type / 类型	Quantity / 数量
SAE 75W90	0,9 Kg