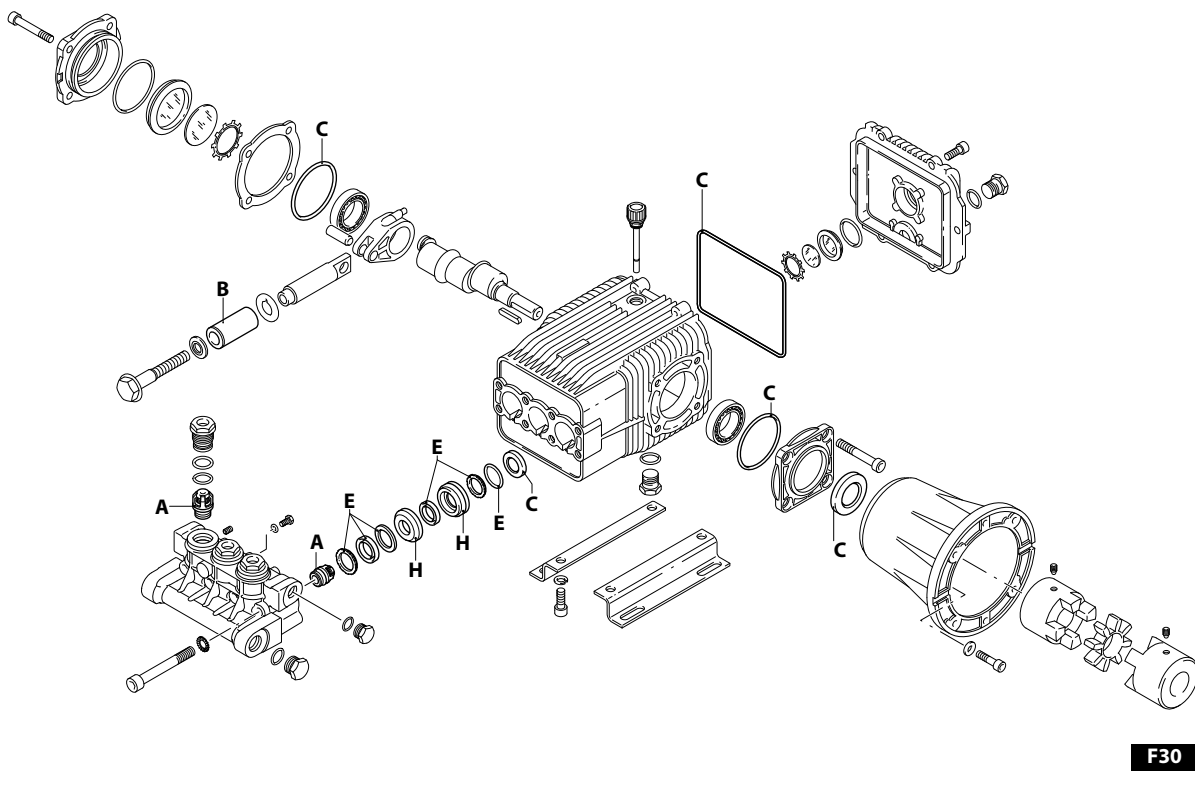


UN002243-FU

PART KITS / 配套零件



UN002244-FU

194 Series

HSHP 1450 rpm

15.50



| Pos. 序号 | Cod. 编号 | Description | 描述 | Qt 数量 | Note 备注 | Pos. 序号 | Cod. 编号 | Description | 描述 | Qt 数量 | Note 备注 |
|---------|---------|----------------|---------------|-------|----------|---------|---------|---------------|-----------------|-------|-----------------|
| 1 | 850260 | Screw | TCEI M10x90 | 8 | C=50Nm | 46 | 200231 | Washer | 垫圈 | 4 | Optional |
| 2 | 650530 | Washer | | 8 | | 51 | 1949011 | Cover | 销片 | 1 | Optional C=53Nm |
| 3 | 2460810 | Screw | TE M6x12 | 3 | | 52 | 1941240 | Support | 支撑座 | 1 | Optional |
| 4 | 1982570 | Washer | | 3 | ☛ C=7Nm | 53 | 1941640 | Screw | TE M6x60 | 3 | 外六角半牙螺栓 |
| 5 | 880830 | O-ring | Ø 15,54x2,62 | 3 | | 54 | 1940940 | Plug | 插头 | 3 | |
| 6 | 1949052 | Complete valve | | 6 | | 55 | 1941070 | Ring | antiestrusione | 3 | ☆ C=7Nm |
| 7 | 1942190 | Head | | 1 | | 58 | 820490 | O-ring | Ø 34,65x1,78 | 3 | ☛ * C=60Nm |
| 8 | 180101 | O-ring | Ø 17,5x2 | 1 | | 60 | 1949215 | Head assembly | 泵头组件 | 1 | |
| 9 | 820361 | Plug | 1/2" G ottone | 1 | C=30Nm | 61 | 1383080 | Flange | F30 | 1 | |
| 10 | 1980740 | Plug | 3/8" G ottone | 3 | ☛ C=25Nm | 62 | 390311 | Washer | | 4 | |
| 11 | 740290 | O-ring | Ø 14x1,78 | 3 | | 63 | 1380180 | Screw | M6x10 | 1 | B3/B14 |
| 14 | 1942470 | Piston guide | anteriore Ø18 | 3 | | 64 | 620610 | Screw | TCEI M8x30 | 4 | 内六角圆柱头螺钉 |
| 16 | 1942690 | Water seal | | 3 | ☒ | 65 | 1942890 | Coupling | | 1 | 联轴器 |
| 18 | 1340600 | Washer | | 3 | | 66 | 1942900 | Ring | | 1 | 齿轮 |
| 19 | 1941020 | Piston | Ø 18 | 3 | | 67 | 1942910 | Coupling | | 1 | 联轴器 |
| 21 | 1383190 | Plate | | 3 | | 75 | 1941270 | Level gauge | | 1 | 油标 |
| 22 | 1942700 | Gasket | | 3 | ☒ | 76 | 100410 | O-ring | Ø 34,6x2,62 | 1 | O型圈 |
| 23 | 1940960 | Piston | di guida | 3 | | 77 | 1941260 | Plate | | 1 | 金属片 |
| 24 | 1940060 | Hub pin | | 3 | | 78 | 1941290 | Ring | | 1 | 外齿锁紧垫圈 |
| 25 | 1941380 | O-ring | Ø 66,34x2,62 | 2 | | 79 | 1942480 | Piston guide | posteriore Ø 18 | 3 | 柱塞套 |
| 26 | 1941390 | Shim 0.05 mm | | 1 | | 80 | 44037 | Motor | | 1 | HP20 B13/B14 |
| | 1941400 | Shim 0.10 mm | | 1 | | 81 | 1660200 | Screw | STEI M5x6 | 1 | ☛ C=4Nm |
| | 1941410 | Shim 0.19 mm | | 1 | | | | | | | |
| | 1941420 | Shim 0.25 mm | | 1 | | | | | | | |
| 28 | 850370 | Screw | TCEI M8x16 | 8 | C=24,5Nm | | | | | | |
| 29 | 1140410 | Bearing | | 2 | | | | | | | |
| 30 | 1940051 | Connecting-rod | alluminio | 3 | ☛ C=20Nm | | | | | | |
| 31 | 1940980 | Shaft | marcato 8 | 1 | | | | | | | |
| 32 | 650250 | Key | | 1 | | | | | | | |
| 33 | 1941330 | Pump body | | 1 | | | | | | | |
| 34 | 1140370 | Plug | | 1 | | | | | | | |
| 35 | 1260250 | Level gauge | | 1 | | | | | | | |
| 36 | 1260430 | Ring | | 1 | | | | | | | |
| 37 | 1940410 | O-ring | Ø 132x3 | 1 | | | | | | | |
| 38 | 1200430 | Screw | TCEI M6x16 | 6 | C=10Nm | | | | | | |
| 39 | 1949010 | Cover | completo | 1 | | | | | | | |
| 40 | 1780690 | Plate | | 1 | | | | | | | |
| 41 | 1140450 | O-ring | Ø 20,24x2,62 | 1 | | | | | | | |
| 42 | 820680 | Ring | tenuta | 1 | (a) | | | | | | |
| 43 | 1940560 | Ring | tenuta | 3 | | | | | | | |
| 44 | 1940370 | Foot | | 2 | | | | | | | |
| 45 | 1940380 | Screw | TCEI 10x18 | 4 | | | | | | | |

PART KITS - 配套零件

| A=KIT 2185 valves 单向阀 | | B=KIT 2872 pistons 柱塞 | | C=KIT 2873 oil seals 油封 | | E=KIT 2874 water seals 水封 | |
|-----------------------------|---------|-----------------------------|---------|-------------------------------|---------|---------------------------------|---------|
| Pos. 序号 | Q.ty 数量 | Pos. 序号 | Q.ty 数量 | Pos. 序号 | Q.ty 数量 | Pos. 序号 | Q.ty 数量 |
| 6 | 6 | 19 | 3 | 25 | 2 | 16 | 3 |
| | | | | 37 | 1 | 22 | 3 |
| | | | | 42 | 1 | 58 | 3 |
| | | | | 43 | 3 | | |

| H=KIT 42120 pistons guide 柱塞套 | | | | | | | |
|-------------------------------------|---------|---------|---------|---------|---------|---------|---------|
| Pos. 序号 | Q.ty 数量 | Pos. 序号 | Q.ty 数量 | Pos. 序号 | Q.ty 数量 | Pos. 序号 | Q.ty 数量 |
| 14 | 3 | | | | | | |
| 79 | 3 | | | | | | |

SIMBOLOGIA - 标记

- C Tightening torque tolerance 0±10% / 拧紧力矩公差 0±10%
- ☛ Screw with Loxeal 55-14 / 用 Loxeal 55-14 螺丝
- ☒ Lubricate with grease Molykote PG54 / 用 Molykote PG54 润滑
- ☆ The thread lock should only be placed on the nut, not on the screw prior to assembly / 螺纹锁应该放在螺母上, 而不是放在配件之前的螺栓上
- * Tighten by hand, DO NOT use screwdrivers to avoid breakage of the valve cages / 手握紧, 不要用螺丝刀预防阀笼损坏
- For the suction valves assembly use pad code 1942450 / 装配吸气阀使用编号1942450的衬垫
- For the delivery valves assembly use pad code 1942460 / 传递吸气阀使用编号1942460的衬垫
- For extraction of the valves seats (delivery and suction) use tool code 1942430 / 取出阀座(传递和吸入)使用编号1942430的工具
- (a) Fit the seal with tool code nr. 1941990 / 用 nr. 1941990 工具进行密封

| Oil - 机油 | |
|-----------|---------------|
| Type / 类型 | Quantity / 数量 |
| SAE 75W90 | 0,9 Kg |